

## CLINICAL SYMPTOMS AND POSTMORTEM LESIONS DEVELOPED IN DOMESTIC PIGS AFFECTED WITH CLASSICAL SWINE FEVER

### MODE OF TRANSMISSION OF CSF VIRUS



Piglets pickup infection from affected mother through direct contact. Photo credit: N N Barman



Pig feeding on hotel waste can pick up CSFV infection. Photo credit: N N Barman



Scavenging pigs pick up infection feeding on garbage. Photo credit: N N Barman



Feeding of uncooked hotel waste causes CSFV infection. Photo credit: N N Barman



Free grazing pigs pick up infection through consumption of uncooked waste feed. Photo credit: N N Barman



CSF affected pig dressed at home and brought to the market for selling pork. Photo credit: N N Barman



Selling of CSF affected pork in open market can cause spread of the virus. Photo credit: N N Barman

### CLINICAL SYMPTOMS EXHIBITED BY CSF AFFECTED ANIMALS



Hog cholera affected adult pig hide inside straw. Photo credit: N N Barman





Affected piglets show high fever, rough hair coat, in coordination in movement. Photo credit: N N Barman



CSF affected pigs showing posterior paralysis. Photo credit: N N Barman



High mortality of grower pigs in CSF. Photo credit: N N Barman



CSF affected pigs lie down and reluctant to move. Photo credit: N N Barman



Pin point to pin head haemorrhages in the skin of CSFV infected pig. Photo credit: N N Barman



Patchy haemorrhages in the skin of CSFV infected pig. Photo credit: N N Barman



Patchy haemorrhages in the skin due to CSFV infection. Photo credit: N N Barman



Chronic CSFV infection causes debilitating condition in pig. Photo credit: N N Barman



Chronic CSFV infection causes diarrhea and debilitating condition in pig. Photo credit: N N Barman



Hyperaemia and blotching of ear in CSF affected adult pig. Photo credit: N N Barman.



Sloughing off skin of the ear in CSF affected adult pig. Photo credit: N N Barman



Piglets born out of the persistent CSFV infected sow showing tremor. Photo credit: N N Barman



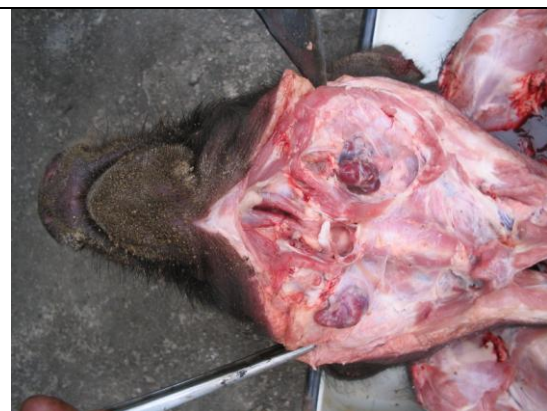


Abortion in CSF virus infected pregnant sows.  
Photo credit: N N Barman

### PATHOLOGICAL CHANGES IN CSF AFFECTED ANIMALS



Haemorrhagic lesions in lymph nodes:  
Classical Swine Fever. Photo credit: N N Barman



Haemorrhagic mandibular lymph nodes in CSF affected pig. Photo credit: N N Barman



Pneumonic lungs in CSF affected pig. Photo credit: N N Barman



Pin point and pin head haemorrhages in the kidneys. Photo credit: N N Barman



Pin point haemorrhages in the kidneys. Photo credit: N N Barman



CSFV infected pig showing pin point to pin head hemorrhage in urinary bladder

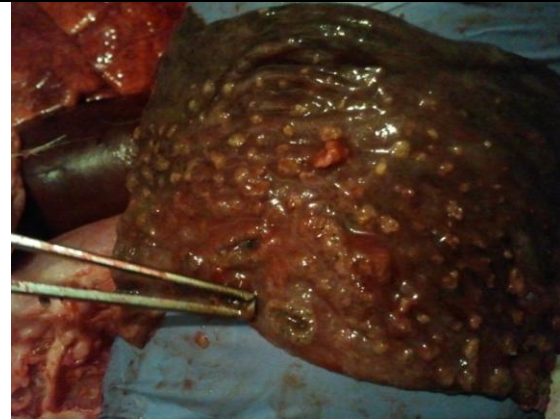


Classical Swine Fever - Haemorrhagic infarcts in the Spleen. Photo credit:





Highly congested mesentery along with haemorrhagic lymph nodes. Photo credit: N N Barman



Typical button ulcer in colon of CSF affected pig. Photo credit: N N Barman



Typical button ulcer in colon of CSF affected pig. Photo credit: N N Barman



Classical Swine Fever - Ulcer formation in the large bowel. Photo credit: N N Barman





Congested brain in CSF affected pig. Photo credit: N N Barman



Classical Swine Fever - Pelvic haemorrhage in the kidney. Photo credit: N N Barman